



---

# THE MARTINS

---

143 OUNDLE ROAD



POSTLAND  
DEVELOPMENTS

---

# THE MARTINS

---

143 OUNDLE ROAD

The Martins is a development of two blocks of beautifully crafted apartments boasting one to 2 bedrooms, with the capacity for three.

Within the city of Peterborough, The Martins' development is one not to miss out on. Within walking distance to the centre and the city's train station, this development offers the client an apartment built to the upmost quality, with close proximity to local amenities.



WHARF ROAD



POSTLAND  
DEVELOPMENTS



BENEDICT



AUGUSTINE



To register your interest or for further information  
please call now on 01733 841931



---

# THE MARTINS

---

143 OUNDLE ROAD



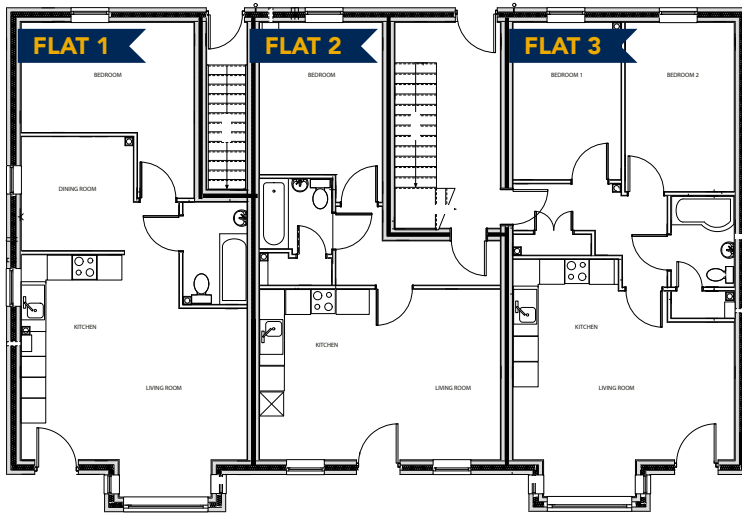
## AUGUSTINE

Consisting of 8 Apartments  
6 One Bedroom and 2 Two Bedroom.

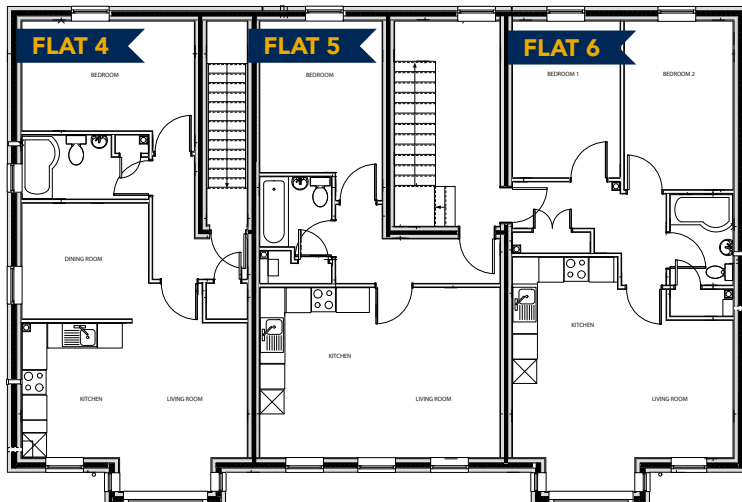
The Augustine block is made up of three floors, with the first two floors each holding three individual flats. All flats have their own entrance doors and have spacious living areas. The ground floor flats have the luxury of their own private front doors, as well as a communal entrance for other occupants.

Stairs lead to the first and second floors, with the second floor boasting the largest flats of the Augustine Block. The first floor apartments, like the ground floor, have very large living areas, along with plans for a second bedroom or a larger bathroom. On the second floor, with a large entrance hall, open living and dining area, the two flats offer the capacity for a 2nd bedroom and a spacious and comfortable living experience.

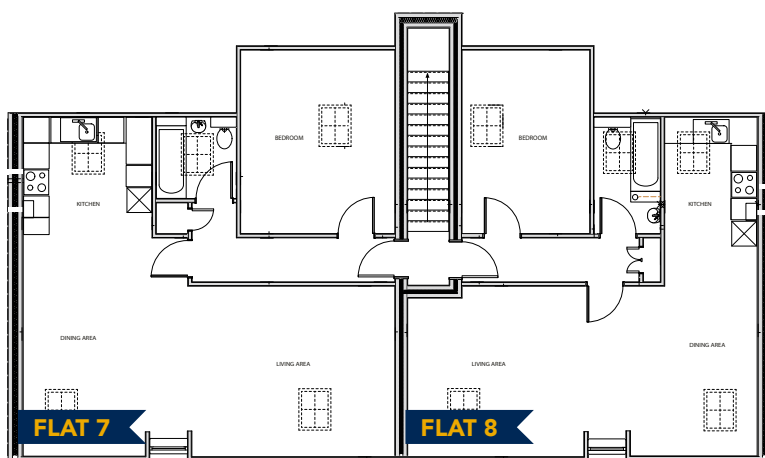
To register your interest or for further information  
please call now on 01733 841931



## GROUND FLOOR



## FIRST FLOOR



## SECOND FLOOR

# AUGUSTINE

The Augustine block is made up of three floors.

## GROUND FLOOR

FLAT 1 - 1 bedroom  
594 sqft

FLAT 2 - 1 bedroom  
514 sqft

FLAT 3 - 2 bedroom  
643 sqft

## FIRST FLOOR

FLAT 4 - 1 bedroom  
594 sqft

FLAT 5 - 1 bedroom  
514 sqft

FLAT 6 - 2 bedroom  
643 sqft

## SECOND FLOOR

FLAT 7 - 1 bedroom  
828 sqft

FLAT 8 - 1 bedroom  
713 sqft



---

# THE MARTINS

---

143 OUNDLE ROAD

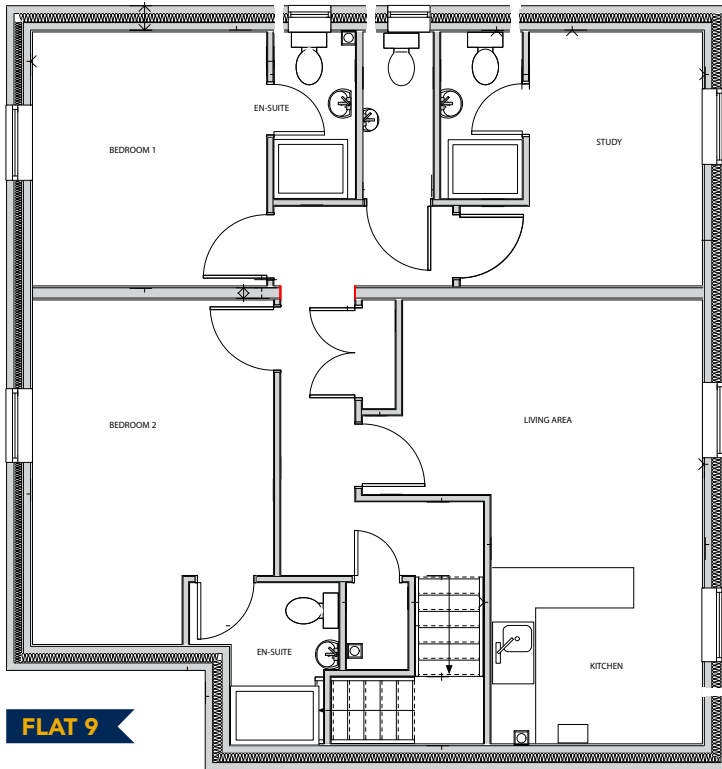


## BENEDICT

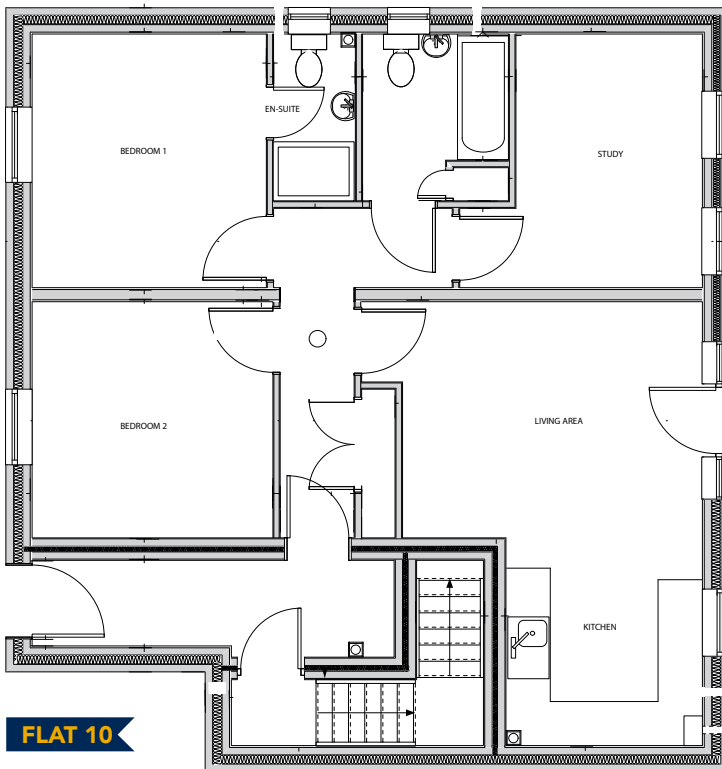
### Consisting of 2 Two Bedroom Apartments

The Benedict block has two floors, with two apartments. The ground floor and first floor both feature large living and dining rooms, as well as plans for three bedrooms or a single study. Along with two large bedrooms, there is also space for an open plan kitchen and diner. The first floor features its own private stair access, allowing privacy and space in the apartment. Each floor also boasts an en-suite for one of the bedrooms, to create a modern feel to the apartment.

To register your interest or for further information  
please call now on 01733 841931



**GROUND FLOOR**



**FIRST FLOOR**

**BENEDICT**

The Benedict block is home to two floors, with two apartments.

**GROUND FLOOR**

FLAT 9 - 2 bedroom  
914 sqft

**FIRST FLOOR**

FLAT 10 - 2 bedroom  
914 sqft





Peterborough Cathedral provides not only a breathtaking view but is also a landmark in British society.







## PETERBOROUGH

Within the UK, Peterborough is the only Gigabit City and one of the fastest growing, making it an incredibly vibrant and dynamic place to reside. With a £1 billion regeneration currently underway, Peterborough is an exciting place to be. Boasting a great range of popular restaurants, retailers and amenities, the city continues to add to its popularity. With its iconic cathedral, Peterborough has a wonderful mix of both history and contemporary.

Around the city there are excellent primary and secondary schools including the prestigious King's (The Cathedral) School.

The central railway station is ideal for fast and direct trains to major cities such as Birmingham, Manchester, Edinburgh and London, which can be reached in 45 minutes.

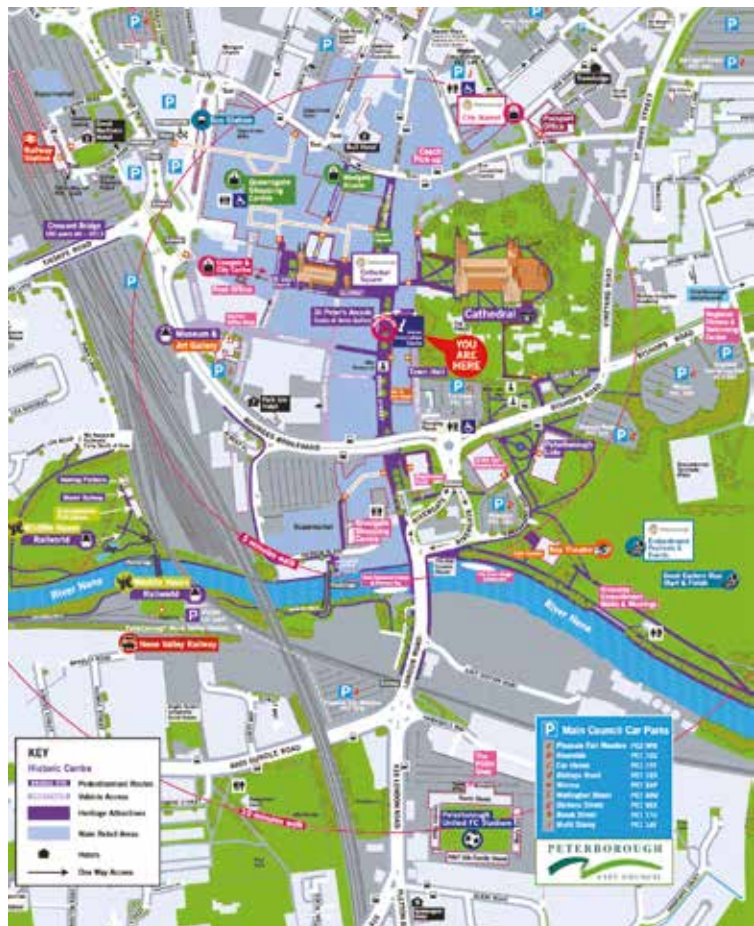


With a railway station nearby, Peterborough railway station is perfect for fast and direct trains to places such as London, the Midlands and the North.

Excellent Rail Connections:

Peterborough to...

- London - 45 minutes
- York - 1 hour 10 minutes
- Stansted - 1 hour 20 minutes
- Leeds - 1 hour 30 minutes
- Birmingham - 1 hour 45 minutes
- Manchester - 3 hours
- Liverpool - 4 Hours
- Edinburgh - 4 hours





POSTLAND  
DEVELOPMENTS

Poplar Farm  
Coates  
Peterborough  
PE7 2DU